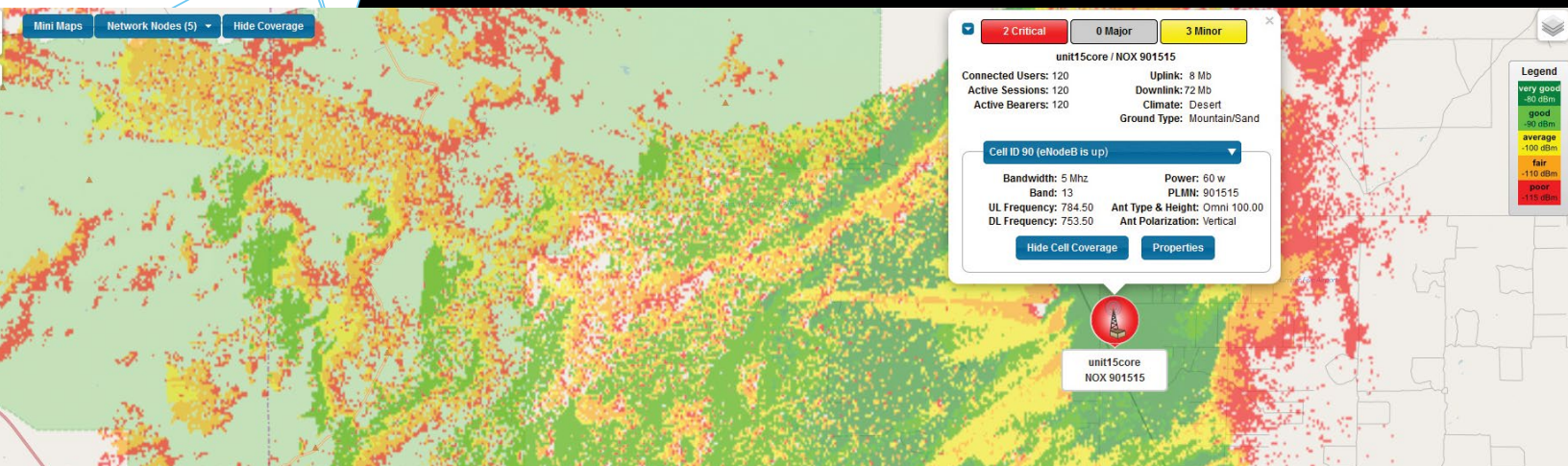


Oceus Networks ONmission™

NETWORK MANAGEMENT CONTROL CENTER



END-TO-END MOBILE NETWORK MANAGEMENT FOR BATTLEFIELD, CRITICAL INFRASTRUCTURE AND EMERGENCY RESPONSE SITUATIONS.

Optimal situational awareness is essential to understanding how information, events and actions will impact mission-critical goals and objectives. Providing secure tactical communications can be difficult on the battlefield, in remote locations and in emergency response situations where infrastructure is sparse or damaged. In these environments, reliable management of both the network infrastructure and end user devices is mandatory.

Oceus Networks' ONmission™ is a Network Management Control Center that enables management of multiple Xiphos® 4G LTE tactical wireless systems and mobile devices attached to the network. The ONmission user interface was developed from the ground up to provide a superior user experience and leverages the latest web technology. Since Oceus created both the Xiphos system and the ONmission platform, both products provide a seamless level of integration that is far superior to other Network Management System (NMS) platforms.

ONmission

Key Benefits

Ease of Use: Traditional Network Management Systems (NMS) are complex as well as difficult to set up and maintain. ONmission is NOT a traditional NMS. ONmission is designed from the ground up with the user experience in mind.

Xiphos Management: ONmission is designed to easily manage a wide range of Xiphos solution deployments and Network of Xiphos (NOX) configurations

SNMP Management: Management of 3rd party nodes via SNMP.

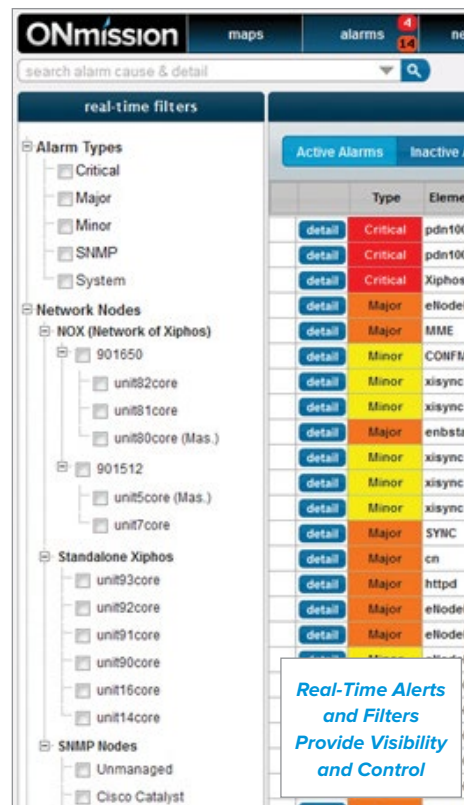
Device Management: ONmission's optional mobile device management functionality gives the operator the ability to remote wipe, remote lock, push or delete applications and locate devices. Devices may be audited to ensure unauthorized applications are not installed by end users. Remote support can easily be provided to end users.

Map Server: ONmission's optional Map Server is used to serve map imagery to the network management function.

Flexible Configurations: ONmission is a flexible system. Optional components include a mapping server and mobile device management.

Based on Commercial Technology: ONmission is a platform suite consisting of an operational Graphical User Interface (GUI) that uses standard technologies for integrating components.

Oceus Networks provides customized mobile broadband products and solutions to governments and enterprise customers across the globe leveraging the latest in standards-based commercial technology. Positioned as an industry leader, Oceus Networks specializes in fixed and wireless broadband solutions that enable secure, high-speed voice, video and data communications. Privately U.S.-owned and operated, Oceus Networks' headquarters are located in Reston, Virginia, with labs in Reston and Plano, Texas.



To learn more about the Oceus Networks ONmission solution, visit: www.oceusnetworks.com/onmission

ONMISSION R3.1 FEATURES

- RF coverage plotting and analysis
- Interference and jamming detection
- Simplified NOX integration and configuration
- Team analysis and collaboration tool
- Real-time maps for location of both mobile and static Xiphos systems
- Multiple live map views
- Map Scale
- Web Map Service (WMS) server support
- Maps Keyhole Markup Language (KML) support
- Supports SNMP v1, 2c, 3 nodes
- SNMP Monitoring
- MIB Handling (individual or bulk)
- Visible node position and status on map view
- Device Location on Maps
- Device Tracking on Maps
- Node grouping: Hierarchical multi-level node display
- Alarm manager: Configuration and control of alarm handling and display
- Alarm page with notes per alarm
- Consolidated alarm view of multiple nodes
- Real-time alarm view and filter capability
- Alarm event history
- Xiphos subscriber status
- Xiphos user provisioning (single or bulk)
- Xiphos control panel management
- Network of Xiphos (NOX) management
- Mobile Device Management (MDM)
- Over-the-Air (OTA) programming
- Android™ device management
- Add, remove, change, wipe, lock and/or block device(s)
- List device data
- Push or delete applications
- Group mobile device provisioning
- Mobile device auditing
- Mobile device location query
- MDM "Light" (Reboot, Lock, Set Password, Wipe)
- System location display
- System health display
- Xiphos system management
- Concurrently manage multiple Xiphos solutions
- Manage up to 5,000 devices
- Multiple users' data display
- Multiple systems data display
- Single device statistics
- System information display
- Device policy management
- Single point of access to all Xiphos node sub-interfaces
- Multiple NOX support
- Event logging
- Report generation tool
- Report SSO
- SNMP based graphing tool
- Cursor-on-Target (CoT) support- Sensor collection from devices
- In-browser SSH and Telnet management
- In-browser network troubleshooting (traceroute and ping)